



The PureView MDL is a leader when it comes to energy efficiency, light uniformity and color rendering in display case merchandising lighting applications. The PureView MDL is set apart from traditional display case lighting methods by utilizing the latest advancements in LED technology and VE's Patented "Low Glare" coin optic design, delivering and enhanced shopping experience for the consumer without sacrificing reliability, energy efficiency and durability. Valuable to the merchandiser, and easy to install. The PureView MDL is here to satisfy your Refrigerated Case Lighting needs for many years to come.



PRODUCT SPECIFICATIONS

CRI
84

Color Temperatures
4000K

Ambient Operating Temp
Min -20°F, Max 90°F

Frame
Shatter proof metal guard

Finish
White Powder Coat

Certification
UL, ULC, ROHS, NSF

Uniformity
1:1;1 6 inch mounting distance

L70 life
100,000 Hours

Reflector
VE Patented Zero Glare Coined Optic

LED
Mid power LED

Fixture Power
Input Power 120 VAC

Fixture Watts
6 Watts, 12 watts, 15 watts

IP65 Rating

Made in U.S.A.

Warranty

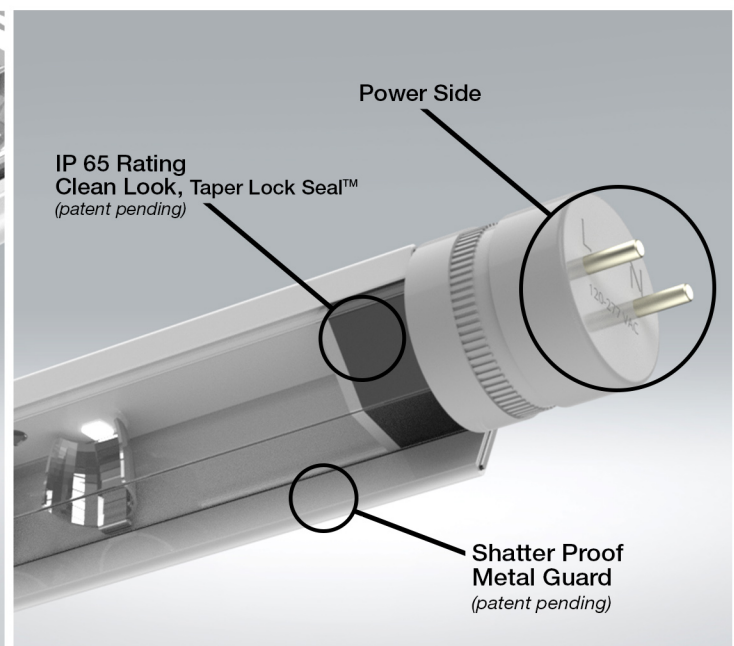
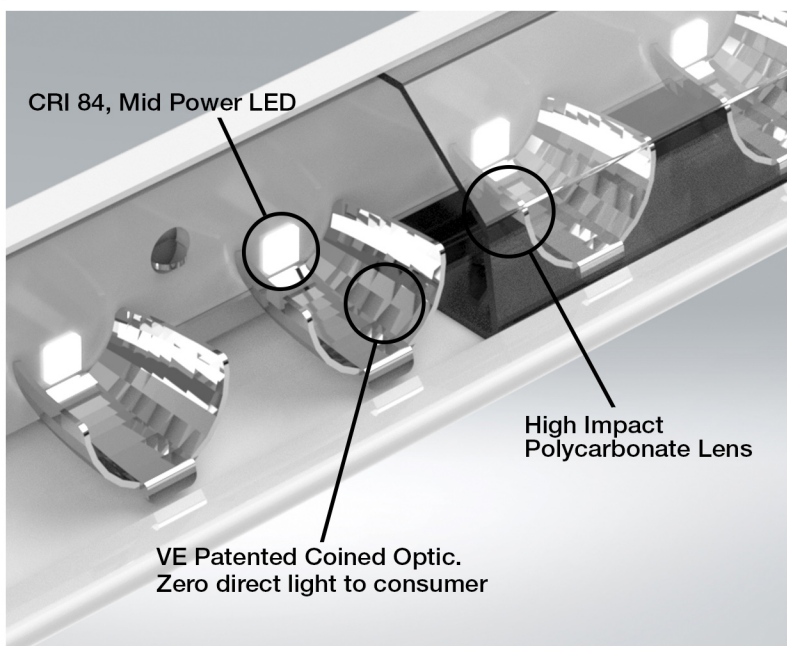
5-year limited warranty. . (See attachment for details)
Complete warranty terms located at: www.visionengineering.com

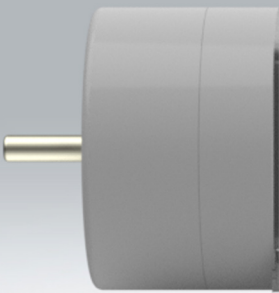
Notes

1. Actual performance may differ as a result of end-user environment and application. 2. Visit www.visionengineering.com for the most up to date specs and additional information.



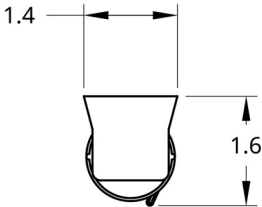
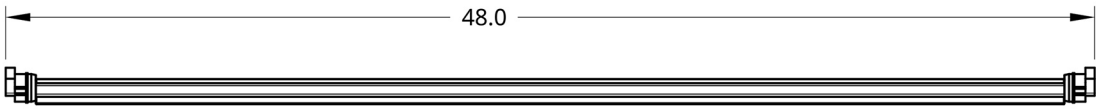
PRODUCT DETAILS





View from Consumer
Zero Light Pollution

TECHNICAL DRAWINGS



Length 48.0" Width 1.4" Height 1.6"

PureView MDL					
Part Number	Description	Power	Lumens	LPW	CRI
PV-MDL-L5-4000K-48- 6 W	48" Mid Power Fixture	5.91	704	119	83
PV-MDL-L5-4000K-48-12W	48" Mid Power Fixture	12.3	1450	116.9	83
PV-MDL-L5-4000K-48-15W	48" Mid Power Fixture	15	1695	113	83